

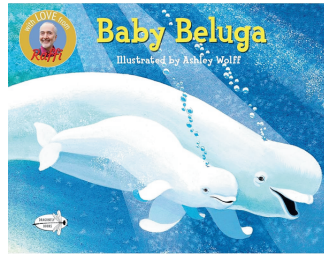
# The Scoop in Family Child Care

June 2026 | Issue 60

SAL Child Care Connection of Central Illinois

## Featured Book

Raffi's most popular and beloved song about the "little white whale on the go" is available in a paper format! Singing supports and encourages even the youngest child's speech and listening skills, which make Baby Beluga perfect for early learning.



Join this adorable baby whale in a busy day at sea, and reach a sweet, warm mother-child bedtime ending. With its delightful illustrations, this charming lullaby and lyrical tribute to an endangered creature is the ideal sing-along for a whole generation of readers.

<https://youtu.be/1BDA1siCkQ?si=zwoaOqysZJa1pxBo>

## Sensory

### Seashell Letter Matching Sensory Bin

#### Materials Needed

- Plastic Container
- 52 Seashells
- Sand
- Permanent Marker



#### Instructions

Write each letter of the alphabet in upper case and lower case on a shell. Fill your container with as much sand as you would like. Pick out about 9 or 10 sets of the lettered shells and bury them in the sand. Now, have your children dig up the letters for matches. For added difficulty, have them dig for shells to spell a word.

## Art Project

### Paper Plate Jellyfish

#### Materials Needed

- Paper plate
- Paint
- Glitter/Sequins
- Ribbon
- Felt
- Scissors, Stapler, Glue



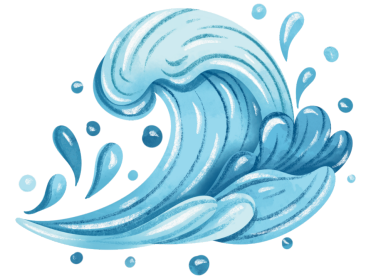
#### Instructions

Have the children paint their paper plate the way they want. Once they are done, offer a little glitter or sequins to add sparkle. Trim the paper plate to a 'jellyfish' shape. Cut a number of ribbon strands of various lengths to add to the plate.

## Finger Play

### The Wavy Sea

Here is the sea  
The wavy sea  
Here is a boat  
And here is me  
And all of the fishes  
Way down below  
Wiggle their tails  
And away they go!



<https://youtu.be/ei-YN5jAyJs?si=vA4ul0ggngPqt38Q>

## Nutrition

### Under the Sea Graham Crackers

#### Ingredients

- Graham Crackers
- Cream Cheese
- Blue Food Coloring
- Goldfish Crackers
- Sprinkles (Optional)



#### Directions

In a bowl, mix together the cream cheese and blue food coloring until fully combined. Spread the blue cream cheese onto the graham crackers. Top with goldfish crackers. **Optional:** using the different shapes of sprinkles, try to create other sea creatures or bubbles. Crush up another graham cracker and add to the bottom for "sand."

## 12 Additional Sea-Themed Books



# The Scoop in Family Child Care

June 2026 | Issue 60

SAL Child Care Connection of Central Illinois

## Referral Services

### Submit Your Complete Update Survey

If you have not done so, please take ten minutes to follow the QR code to fill out the Complete Update Survey. This year, the State is using the data we collect to set the new CCAP Reimbursement rates, so it's crucial that we get your response.



If you have any questions, contact our Referral Specialist, Jessi, at [jguzman@salccc.org](mailto:jguzman@salccc.org) or (309) 686-3750, Ext. 2129

## Trainings

### Heart-Centered Self-Care with Nature Explore

Join us live online as we focus on creating a balanced and inspired work environment through a people-centered approach. Designed to help passionate educators honor the practice of heart-centered self-care as a way to enrich their practice.

**Thursday, June 11**

6:30 - 8:30 p.m. | Online via Zoom

**Registration Deadline: 11:55 p.m. Thursday, June 4**

Register at [www.salccc.org/provider-services/training](http://www.salccc.org/provider-services/training).

## Health & Safety

### Sun Safety Tips

1. Apply sunscreen before putting on clothes to prevent missing any spots.
2. Keep an eye on sunscreen expiration dates - ingredients lose effectiveness over time.
3. Try to use water-resistant sunscreen, which offers protection if you sweat or swim.
4. To protect your lips, apply lip balm that contains sunscreen.
5. Choose sunscreen that offers broad-spectrum (UVA and UVB) protection.
6. Wear UV-blocking sunglasses and a broad-brimmed hat to protect your eyes from sun damage.

## ExceleRate Illinois

Through ExceleRate Illinois, the Bronze Circle of Quality includes completion of a robust series of trainings for the family child care provider and assistant, as well as recognition of qualifications and professional development.

For more information on ExceleRate Illinois and the eligibility criteria, go to [www.exceleRateillinois.com](http://www.exceleRateillinois.com).

If you'd need assistance or want to talk through your options, contact our Quality Specialist, Heather, at [hschichner@salccc.org](mailto:hschichner@salccc.org) or (309) 686-3750, Ext. 2105.

## Home Child Care Network

Home Child Care Network is seeking licensed home care providers to join their **free** program. Their program offers free monthly training, technical support for grants and budgets, mental health support including screenings, and add-on rates for 2nd and 3rd shifts and weekends, with monthly payments guaranteed by the 15th of the month.

For more information, call (309) 685-8064.

## Higher Education Navigation

### Thinking about advancing your Early Education Career?

Contact a Higher Education Navigator for Help:

1. Determining your educational goals
2. Identifying which programs are available to best fit your needs
3. Connecting you with Early Childhood Education scholarship opportunities
4. Acting as a point of contact with Higher Education Institutions
5. Completing your Gateways membership
6. CDA cohort
7. Other assistance as needed

Call (309) 686-3750 Ext. 2111

## Home Daycare Professional Group

Third Tuesday of the Month

6:30 p.m. - 8:00 p.m.

Zoom Meeting



For more information on any of our programs and services  
Call: (309) 686-3750 | Fax: (309) 686-3850 | Visit: [www.salccc.org](http://www.salccc.org)

Child Care Assistance Program - Option 2

Referrals - Extension 2129

Training Registration & Grants - Extension 2111

Higher Education Navigation - Extension 2111

Smart Start Grant Expert - Extension 2105

Quality Visits or Information on ExceleRate - Extension 2105

Infant-Toddler Consultations - Extension 2118

**SAL** COMMUNITY SERVICES

Child Care Connection of Central Illinois

3425 N. Dries Ln  
Peoria, IL 61604



@salchildcareconnection