



# April-June 2026 Training Calendar

**S·A·L** COMMUNITY  
SERVICES

Child Care Connection of Central Illinois

Strengthening Families, Providers, and Communities

**CCR&R**

*Representing 16 Local Agencies Across Illinois*

Child Care Resource and Referral System

Dates	Training Name
4/8/26 & 4/15/26	Infant Toddler Pyramid Module 8: Challenging Behavior
4/9/26 & 4/16/26	Program for Infant Toddler Care Module 2: Group Care
4/13/26	Preschool Pyramid Module 6: Overview of Prevent-Teach-Reinforce for Young Children
4/18/26	CPR First Aid
4/21/26	Recognizing & Responding to Seizures
4/22/26	Super School-Age: Helping Them Stay Engaged and Excited ALL Summer!
4/23/26	CPR First Aid
4/29/26 & 4/30/26	Program for Infant Toddler Care Module 4: Culture, Family & Providers
5/2/26	CPR First Aid
5/4/26 & 5/18/26	Social Emotional Development & Positive Behavior Outcomes
5/11/26	Career Pathways in Early Childhood Education & Care
5/16/26	Strengthening Business Practices for Family Child Care: Budgets, Planning & Projections
5/21/26	Supporting Young Children's Emotional Development Using Concepts from "A Little SPOT of Emotion"
5/28/26	CPR First Aid

Dates	Training Name
5/30/26	Strengthening Business Practices for Family Child Care: Financial Reports & Internal Controls
6/1/26, 6/15/26 & 6/29/26	Healthy Kids, Healthy Future: Physical Activity Learning Sessions (PALS)
6/2/26	Active Supervision
6/6/26	CPR First Aid
6/9/26	Career Pathways in Early Childhood Education & Care
6/13/26	Strengthening Business Practices for Family Child Care: Marketing Your Program
6/18/26	CPR First Aid
6/23/26	CPR First Aid-Canton, IL
6/27/26	Strengthening Business Practices for Family Child Care: Staff Recruitment & Retention for Family Child Care Providers

**Register for  
Upcoming Trainings**



# CPR & First Aid Training

3

CPR & First Aid is offered at no cost to child care providers who care for at least one child receiving Child Care Assistance Program (CCAP) funding.

Trainings are subject to change, you will be notified if changes or cancellations occur.

Participant programs must currently be an approved provider for the child care assistance program (CCAP) in Bureau, Fulton, LaSalle, Marshall, Peoria, Putnam, Stark, Tazewell or Woodford counties and be listed in the SAL CCCI database.

The participant must be a current member of the Gateways to Opportunity Registry.

Unless a location is listed with a session below, all trainings are at Affinity Institute, 3535 N. California, Peoria, IL 61603 unless otherwise noted. The registration deadline is one week prior to the training.

For questions, please contact (309) 686-3750, Option 4, or [trainingccc@salccc.org](mailto:trainingccc@salccc.org)

DAY/DATE	TIME
SAT 4/18/26	9:00AM-12:00PM
THU 4/23/26	6:00PM-9:00PM
SAT 5/2/26	9:00AM-12:00PM
THU 5/28/26	6:00PM-9:00PM
SAT 6/6/26	9:00AM-12:00PM
THU 6/18/26	6:00PM-9:00PM
TUE 6/23/26 Canton YWCA Child Care 111 N. Avenue A, Canton, IL 61520	6:00pm-9:00pm

**TUE 4/21/26**  
**6:30pm-7:30pm**

**Zoom**

**Free**

**Deadline:**  
**4/13/26**

## **Recognizing & Responding to Seizures**

1 in 26 people will develop epilepsy in their lifetime. 1 in 10 people will have a seizure. Make sure you know what to do! Learn how to recognize and respond to seizures at your program, and how to support those with epilepsy.

Gateways Competency Area: HSW (1.00)  
CDA Subject Area: CDA 1(1.00)

*Presented by Aaron Lohnes, Epilepsy Advocacy Network*



**WED 4/22/26**  
**6:30pm-8:30pm**

**Zoom**

**Free**

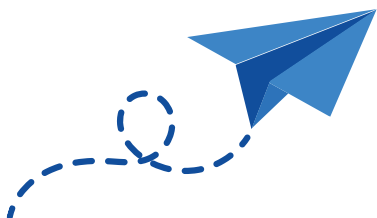
**Registration**  
**Deadline: 4/14/26**

## **Super School-Age: Helping Them Stay Engaged and Excited ALL Summer!**

If you work with school-age children and struggle to keep them engaged and excited to be in the child care setting all summer, then this training is for you! This session is packed with ideas to help you facilitate activities for this age group and provides materials that will keep those school-age kiddos engaged and excited to be in your program ALL summer!

Gateways Competency Area: CPD(2.00) CDA Subject Area: CDA 2(2.00)

*Presented by Paula Schnicker-Johnson, Rend Lake College*



**Register for**  
**Upcoming Trainings**



**MON 5/11/26**  
**1:00pm-2:00pm**

**Zoom**  
**Free**

**Registration**  
**Deadline: 5/3/26**

**TUE 6/9/26**  
**6:30pm-7:30pm**

**Zoom**  
**Free**

**Registration**  
**Deadline: 5/3/26**

## Career Pathways in Early Childhood Education & Care Higher Education Workforce Navigation Information Session

What can a Higher Education Navigator do for you?

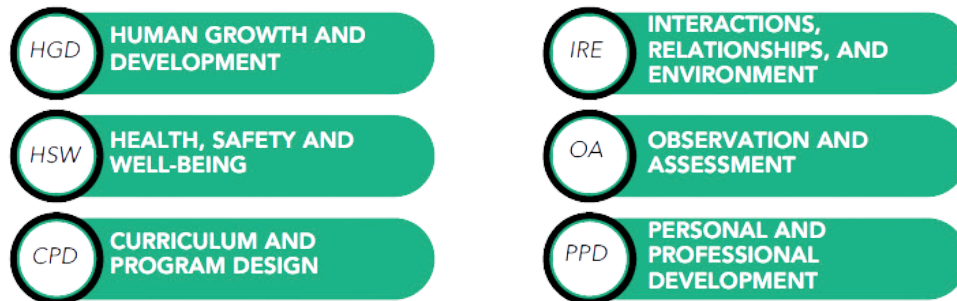
- Discuss your career and professional goals in the field of early childhood
- Support with available funding and professional development opportunities
- Provide technical assistance support for obtaining a CDA

Scan the QR code below prior to the session you choose to share more about your career aspirations.

Gateways Competency Area: PPD(1.00)  
CDA Subject Area: CDA 6(1.00)

*Presented by Kami McClure, SAL Child Care Connection of Central Illinois*

### GATEWAYS CONTENT AREAS



### CDA SUBJECT AREAS

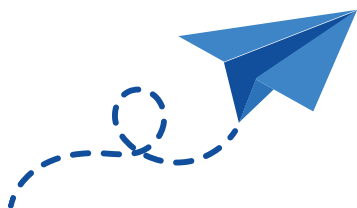


**THU 5/21/26**  
**6:30pm-8:00pm**

**Canton YWCA**  
**Child Care**  
**111 N. Avenue A**  
**Canton, IL 61520**

**Free**

**Registration**  
**Deadline: 5/13/26**



## **Supporting Children's Emotional Development with Concepts from "A Little SPOT of Emotion"**

Using concepts inspired by A Little SPOT of Emotion, participants will explore simple strategies for teaching emotional awareness, supporting self-regulation, and creating an environment where children feel safe expressing their feelings. Through hands-on activities and discussion, educators will learn how to integrate these ideas into daily routines, circle time, and play.

*\*All participants will receive materials to support implementation in their classrooms or programs, including emotion-focused visuals and resources they can use directly with children and implementation support will be available.*

Gateways Competency Area: IRE(1.50) CDA Subject Area: CDA 3(1.50)

*Presented by Becca Thomas, SAL Child Care Connection of Central Illinois*

**TUE 6/2/26**  
**6:30pm-8:00pm**

**Zearing Child**  
**Enrichment**  
**Center**  
**633 E. Masonic**  
**Princeton, IL**  
**61356**

**Free**

**Registration**  
**Deadline:**  
**5/25/26**

## **Active Supervision**

This training educates professionals on the importance and application of active supervision in early childhood environments. It outlines regulatory standards, defines supervision strategies, connects with ECERS-3 quality indicators, and equips providers with practical tools to proactively monitor and engage with children to ensure safety, prevent behavioral issues, and foster positive developmental outcomes.

Gateways Competency Area: HSW(1.50)  
CDA Subject Area: CDA 1(1.50)

*Presented by Heather Schichner, SAL Child Care Connection of Central Illinois*



**TUE 4/8/26 &  
4/15/26  
6:30pm-8:15pm**

**Zoom**

**Free**

**Registration  
Deadline:  
4/1/26**



## **Pyramid Model Infant Toddler Series Module 8: Challenging Behavior**

In Challenging Behavior, a module of the Pyramid Model Infant-Toddler Module Series, participants will: identify and define challenging behavior, and work to understand why challenging behavior happens; discuss how to gather data and implement strategies that will prevent challenging behavior; and discuss strategies to address or respond effectively to challenging behavior when it is present. \*Pyramid classroom materials will be provided.

Gateways Competency Area: OA(1.00); IRE(2.25)  
CDA Subject Areas: 3(2.25); 7(1.00)

*Presented by Christy Dennison, M.Ed., Children's Home  
Association of Illinois*

**MON 4/13/26  
6:30pm-8:00pm**

**Zoom**

**Free**

**Registration  
Deadline:  
4/5/26**

## **Pyramid Model Preschool Series Module 6: Overview of Prevent-Teach-Reinforce for Young Children**

In this module, practitioners learn about the steps of Prevent-Teach-Reinforce for Young Children (PTR-YC) and how PTR-YC is used as a manualized process for conducting a functional behavioral assessment and developing a behavior support plan. \*Pyramid classroom materials will be provided.

Gateways Competency Area: OA(1.50)  
CDA Subject Area: 7(1.50)

*Presented by Carol Tiggelaar, MA, LCPC, I/ECMH-C,  
Children's Home Association of Illinois*



**MON 4/9/26 &  
4/16/26**

**6:00pm-9:00pm**

**SAL Child Care  
Connection of  
Central Illinois  
or Zoom**

**Free  
Registration  
Deadline:  
4/1/26**

## **Program for Infant Toddler Care Module 2: Group Care**

Group care for infants and toddlers requires special attention and six core policies that support secure relationships and healthy development. Module 2 focuses on primary caregiving, thoughtful learning environments, responsive routines, and individualized care for children from birth to age three. It also explains how primary care, small groups, continuity, individualization, culturally responsive practices, and inclusive care form the foundation of high-quality infant/toddler programs. By the end of the module, participants will be prepared to use primary care, create engaging environments, support children through daily routines, and tailor care to each child's needs.

Gateways Competency Area: IRE(8.00) CDA Subject Area: 1(8.00)

*Presented by Jamie Nichols, Rend Lake College*

**WED 4/29/26 &  
THU 4/30/26**

**6:00pm-9:00pm**

**Zoom**

**Free  
Registration  
Deadline:  
4/21/26**

## **Program for Infant Toddler Care Module 4: Culture, Families & Providers**

This training focuses on culture and its implication for families and providers. Participants will learn how family experiences, knowledge, and childrearing beliefs and practices can be incorporated into early care and classroom settings. Cultural expectations and biases will be explored and participants will have the opportunity to increase their cultural awareness in terms of how their assumptions may affect their interaction with young children and families. Participants will demonstrate their understanding of how family structures, diversity in social, cultural, linguistic, or religious backgrounds influence family approaches to parenting in children birth to three, each other, and the community. Participants will gain an understanding of how relationships among caregivers, infants/toddlers, and families can impact other child-family, child-practitioner, and practitioner-family relationships.

Gateways Competency Area: IRE(1.50) CDA Subject Area: 3(1.50)

*Presented by Jamie Nichols, Rend Lake College*

*These are hybrid trainings and participants must complete the virtual session and online assessment to receive credit. Participants will be required to complete and pass the online assessment in order to receive credit for completing the training. Participants must complete and pass the online assessment within 3 weeks of the final face to face training date.*

**MON 5/4/26 &  
5/18/26  
5:45pm-9:00pm**

**SAL Child Care  
Connection of  
Central Illinois  
or Zoom**

**Free**

**Registration  
Deadline:  
4/26/26**

## **Social Emotional Development & Positive Behavior Outcomes**

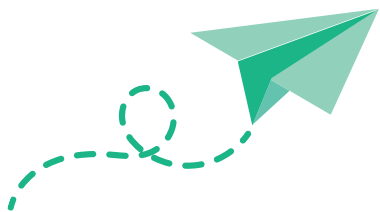
When it comes to behaviors, it's all about social emotional development. During this training, we will reflect on the use of developmentally appropriate social and emotional techniques, how they impact and reinforce positive attachment relationships, and how they lead to changes in behavior.

Caregiving relationships will be shown to support emotional regulation and social skills by modeling and encouraging positive behaviors in young children. By using visuals, group discussions, and case studies, you will be able to support meaningful social and emotional growth within your child care program.

Through examining your own beliefs, reflecting on various theoretical perspectives, and considering the realities of child care programs, we can share tools that support culturally relevant ways to implement social and emotional learning.

Gateways Competency Area: IRE(6.50) CDA Subject Area: 3(3.50); 8(3.00)

*Presented by Carol Tiggelaar, MA, LCPC, I/ECMH-C, Children's Home Association of Illinois*



**SAT 5/16/26,  
5/30/26, 6/2/26  
8:30am-  
11:30am &  
6/27/26  
8:30am-  
12:30pm**

**SAL Child Care  
Connection of  
Central Illinois  
or Zoom**

**Free**

**Registration**

**Deadline:  
5/7/26**

**All participants will receive ready-to-use budgeting templates and in person participants will receive a take-home reference book to help apply training concepts to their own programs. Breakfast will be served.**

## **Strengthening Business Practices for Family Child Care**

The Strengthening Business Practices for Family Child Care training addresses basic concepts in fiscal and operational management of child care programs. The purpose of this training is to strengthen child care provider's foundational knowledge of fiscal terms, concepts, and practices. It encourages providers to realize the importance of fiscal planning to the sustainability of their business operations. It provides tips and best practices in fiscal, organizational, and financial goals and human resource documents in order to help break down the fiscal processes into manageable steps.

### **Budgets, Projections, and Planning**

- Fiscal Management
- Budgeting
- Projecting Revenue & Cost
- Using Data to Make Decisions
- Making Short-Term and Long-Term Adjustments

### **Financial Reports & Internal Controls**

- Income Statements
- Balance Sheets
- Cash Flow Statements
- Examples of Financial Reports

### **Marketing Your Child Care Program:**

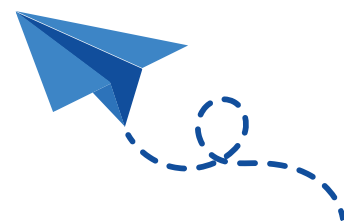
- Understanding how marketing can help sustain the business
- Components of an environmental scan
- The importance of branding
- Marketing tools
- Internal marketing

### **Staff Recruitment and Retention:**

- Understanding how staff recruitment can help sustain the business
- Effective job descriptions
- Establishing a system for recruiting staff
- Conducting effective interviews
- The hiring process
- Evaluating performance and performance management

Gateways Competency Area: PPD(13.00) CDA Subject Area: 5(13.00)

*Presented by Courtney Hatcher, Project CHILd*



**MON 6/1/26,  
6/15/26 &  
6/29/26  
6:30pm-8:30pm**

**SAL Child Care  
Connection of  
Central Illinois &  
Zoom**

**Free**

**Registration  
Deadline:  
5/24/26**

## **Healthy Kids, Healthy Future: Physical Activity Learning Sessions (PALS)**

The PALS training is designed to give early care providers a solid knowledge base of best practices for physical activity with emphasis on healthy lifestyles, environments, and bodies.

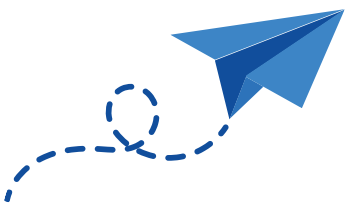
The PALS content addresses physical activity for children birth through age five years, and how to implement physical activities in their programs and share with families. The goal of PALS is to support practice and policy changes in ECE programs. PALS combines content learning with self-assessments, policy development opportunities, resources, and materials, to support practice change in ECE programs, leading to healthier, more active children.

Gateways Competency Area: HSW(6.00)  
CDA Subject Area: 1(6.00)

*Presented by Paula Schnicker-Johnson, Rend Lake College and Kami McClure, SAL Child Care Connection of Central Illinois*

Participating programs receive a variety of materials that support physical activity in early childhood.

Healthy snacks will be provided for the in-person sessions.



The following training policies apply to all SAL Child Care Connection of Central Illinois program sponsored trainings. Participants must register for trainings by the registration deadline listed. Registrations are accepted on a first-come, first-served basis.

To register for hybrid trainings, please choose either the In-Person or Virtual option on the website when registering. Once you are registered, we will send you a confirmation email before the training with a Zoom link to join the training. We will also send you a reminder email in advance of the training to remind you that you are registered. If you are unable to attend any training, please contact us at: 309-686-3750, Option 4.

**Attendance Rule:** Training attendance minimums must be met or the training will be cancelled. Participants will be notified of training cancellations by email.

**Accessing Virtual Trainings:** Virtual trainings can be accessed using a laptop, desktop computer, tablet, or cell phone. Contact SAL Child Care Connection of Central Illinois if you have questions or need additional support.

**In-Person Trainings:** Face masks are optional. Please do not have anyone else attend the training with you unless they are registered to take the training.

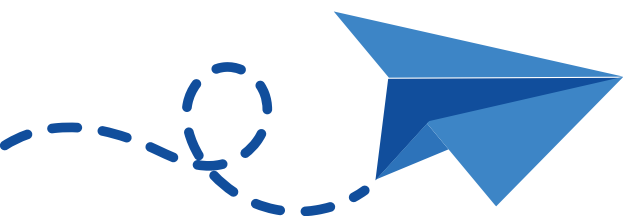
**Late Arrivals:** A fifteen-minute grace period will be given at all training sessions (virtual or face-to-face). This grace period ends 15 minutes after the advertised start time. Participants will not be allowed into the training after the 15-minute grace period has ended.

**Early Departures:** To receive a training certificate, participants must stay until the training is finished. If a participant leaves early, no hours or training certificate will be awarded.

**Training Participation:** Participants must actively engage in training to receive a certificate and training hours. Engaged is defined as participating in polls, using the chat box, sharing, and exchanging ideas, etc. Cameras must be on during most portions of virtual training. To ensure participants are safe and able to engage fully during the designated training time we ask that you refrain from activities that take away from your participation. Activities such as attending another training, shopping, attending sporting events, or being counted in your program's ratio. It is illegal to attend a Zoom session while operating a motor vehicle.

**Technical Assistance:** We can provide technical assistance 15 minutes before the scheduled training time. Once the training starts there is no guarantee that the facilitator/trainer will be able to help you. This is to ensure trainings start promptly on time. If you would like to set up a practice meeting before the training, please contact us at least 24 hours prior to the scheduled training.

**Professional Development Certificates & Transcripts:** Participants will receive a training certificate via email. A paper certificate will only be sent upon request. Participants who need a transcript or verification of their past trainings will be directed to access their IL Gateways to Opportunity Professional Development Record at [www.ilgateways.com](http://www.ilgateways.com)



# Mail-in Registration Form

THIS FORM MAY BE DUPLICATED

First Name \_\_\_\_\_ Last Name \_\_\_\_\_

Place of Employment \_\_\_\_\_

Work Address \_\_\_\_\_

City \_\_\_\_\_ State \_\_\_\_\_ Zip \_\_\_\_\_ Phone (Work) \_\_\_\_\_

Email Address: \_\_\_\_\_ Phone (Home) \_\_\_\_\_

Home Address \_\_\_\_\_

City \_\_\_\_\_ State \_\_\_\_\_ Zip \_\_\_\_\_ Gateway Registry Membership \_\_\_\_\_

Is your program licensed through the Department of Children and Family Services (DCFS)? \_\_\_\_\_

Please indicate your current position

- \_\_\_\_ Family Child Care Owner
- \_\_\_\_ Family Child Care Assistant
- \_\_\_\_ Center Director
- \_\_\_\_ Center Assistant Director
- \_\_\_\_ Center Teacher
- \_\_\_\_ Center Assistant Teacher
- \_\_\_\_ Other

What ages of children do you currently serve?

Please check all that apply."

- \_\_\_\_ Infants
- \_\_\_\_ Toddlers
- \_\_\_\_ Twos
- \_\_\_\_ Preschool
- \_\_\_\_ School Age
- \_\_\_\_ No Ages Served

Does your program currently serve children on the Child Care Assistance (Program (CCAP)?

- \_\_\_\_ Yes
- \_\_\_\_ No

Training Title

Date (s)

Cost

<input type="checkbox"/>			
<input type="checkbox"/>			
<input type="checkbox"/>			
<input type="checkbox"/>			
<input type="checkbox"/>			

TOTAL AMOUNT ENCLOSED: \$ \_\_\_\_\_

Complete this form and mail with payment to  
SAL Child Care Connection of Central  
Atr: Training Registration  
3425 N. Dries Lane Peoria, 61604

Make Checks payable to SAL Child Care Connection of Central Illinois.

All fees are non-refundable and non-transferable.

My signature acknowledges that I have read and understand the registration policies for SAL Child Care Connection of Central Illinois including, but not limited to: Registration fees are non-refundable and non-transferable. I will receive a confirmation email of my registration or a notice if the workshop is full/closed or canceled if my registration is received prior to or on the deadline date listed in the training calendar. A no-show indication is made on my training record if I fail to attend or cancel my registration at least 3 business days in advance of the scheduled training date. Certificates/Training Hours/Credit are not available if I arrive late or leave early. Incomplete registration cannot be accepted and payment must accompany registration form prior to or on the deadline listed within the training calendar.

Signature of Registrant

Date



# Contact Us

3425 N. Dries Lane  
Peoria, IL 61604

**Phone:** (309) 686-3750, Option 4 or  
1 (800) 421-4371, Option 4

**TTY:** (309) 686-3695

**Fax:** (309) 686-3850

**Email:** [trainingccc@salccc.org](mailto:trainingccc@salccc.org)

Follow us on Facebook, Instagram, and  
LinkedIn @SALChildCareConnection

